

Instructions for importing files in to the Icom Software .....1  
 Introduction .....1  
 Preparation .....2  
 Memory CH .....4  
 Importing into Repeater List .....7  
 Importing into Your Call Sign.....9  
 Saving Software Configuration to Radio. ....11

INSTRUCTIONS FOR IMPORTING FILES IN TO THE ICOM SOFTWARE

INTRODUCTION

Not all versions of the Icom software support importing into the software. The following table summarizes the capabilities.

Model	HF + 50MHz	144MHz	440MHz	1.2GHz	DR List	Memory	Repeater List	Your Call Sign List	Importable	FM Repeater List
ID-1		✓		✓		100		20		
IC-2200H		✓				6				
ID-800H		✓	✓			500				
IC-91		✓	✓			800		60		
IC-2820H		✓	✓			500		60		
IC-92		✓	✓			1000		60	✓	
IC-80		✓	✓		✓	1000	300	60	✓	
ID-880H		✓	✓		✓	1000	300	60	✓	
IC-9100	✓	✓	✓			100		100	✓	
ID-31			✓		✓	500	700	200	✓	
ID-51		✓	✓		✓	500	770	200	✓	
IC-7100	✓	✓	✓		✓	500	900	200	✓	
ID-5100		✓	✓		✓	1000	1200	200	✓	✓

For those radios that do support importing of files, a few caveats must be followed.

- Import only as many channels as the radio supports
- Files may be modified to support your desires
  - Names may be changed
  - Channel Numbers and channel order may be changed

- Excel or other programs may be used to edit the .CSV files

Note: This document was created using the CS-31 for examples. This software package looks and acts similar to most of the other packages. Each software package may look or act slightly differently.


## PREPARATION

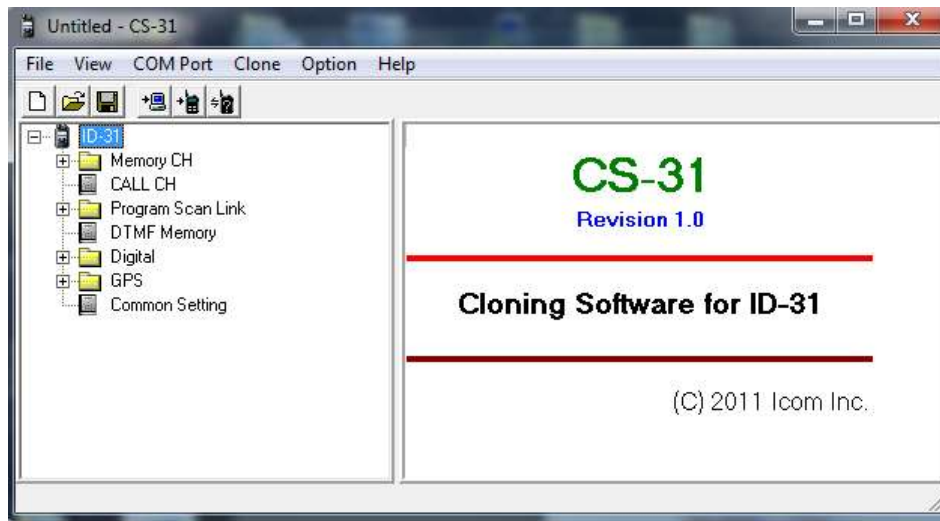
Before you can import the files into the software, you need to load your radio's current configuration into the software. This imports radio settings, as well as your call sign into the software.

Your settings can be load either through a previously saved .ICF file or loaded directly from your radio.

---

## LOAD CONFIGURATION FROM RADIO

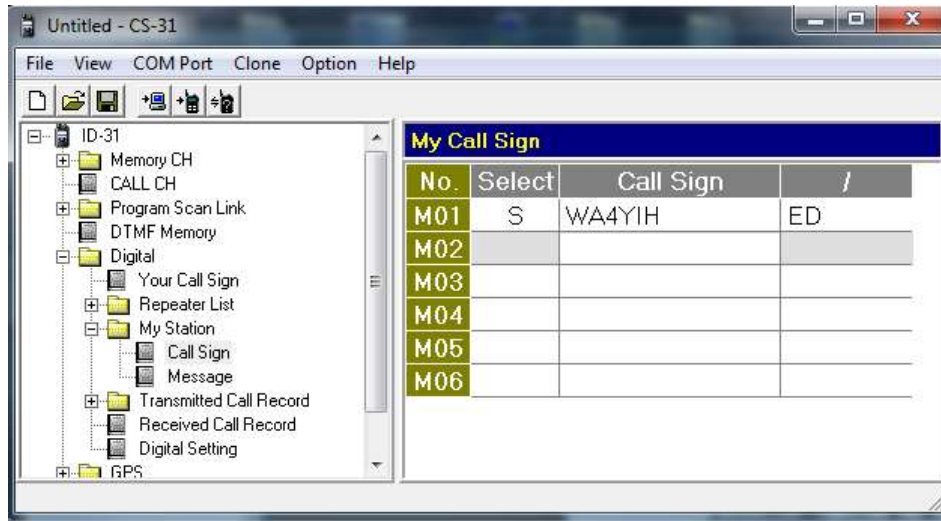
On the toolbar, there are a number of icons. The  icon is for loading information from your radio into the computer. You can also use the menu structure, Clone – Read<-TR, they do the same thing.



When you successfully start the process, the following window will pop up:



Once completed, your software should be filled with information. If you expand Digital and then My Station, you should see your call sign listed.



If this is your first time using the software and you haven't programmed your call sign, here's the place to do it.

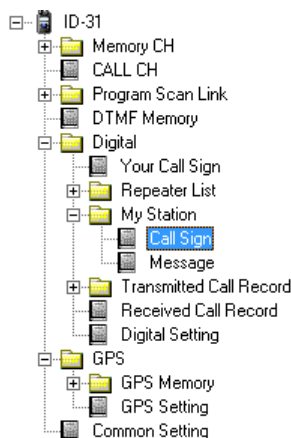
**Hint:** What's the **Select** for? As you might notice, there are 6 locations for call signs on this radio. That means that you enter up to 6 call signs for the radio to use. If you are in a family that has multiple operators, this makes moving the radio between operators easy. The S indicates which call sign is currently selected and will be sent as the MY call sign.

**Hint:** What's the **/** field for? This is where you enter a 4 character identifier for yourself. This is one of 2 text fields that are sent each time you transmit. Many folks use their name or a shortened version of their name in this field, although there are no requirements that the field be used or what goes in it.

---

### UPDATING OTHER SETTINGS

Now is a good time to review all of the settings in the radio and optimize any that you desire. Each radio has slightly different settings. You should refer to the manufacturer's manual for details on each setting:




---

### DIFFERENT TYPES OF MEMORY SETTINGS

This is where things start to get confusing for many people. No longer is there a single set of memories for each radio. There are different memories for different functions and different radios have different configurations.

So, let's start with the basics. There are 3 different sets of memories that we are going to be using during the DSTARInfo.com import process.

Memory CH	This is the classic set of memory channels. These memories may hold D-STAR as well as FM information (and SSB on the IC-9100).
Repeater List	This set of memories is only for D-STAR operations. It has changed slightly in use from the early radios to the current set. It becomes most useful on the radios that support DR mode where it represents the list of repeaters that you will talk on.
Your Call Sign	This set of memories is only for D-STAR operations. It has changed slightly in use from the early radios to the current set. It becomes most useful on the radios that support DR mode where it represents the list of commands that you will use in the YOUR field.

## MEMORY CH

The Memory CH memories are laid out into groups of 100 memories each. You should generally create an import file for each bank of 100 and import each one individually. A common use of the banks would be for repeaters in your state/country in one bank with adjacent (or areas that you travel to) located in other banks. There is no need to load all of the repeaters around the world into the Memory CH banks.

You may also want to dedicate one or more banks to FM or other mode repeaters/channels.

On some radios, particularly the IC-91AD, there are two banks of Memory CH, an A and a B. The A band channels do not support D-STAR, while the B band does.

Memory CH are also good for grouping repeaters and memory channels that support different functions for the same repeaters. For example:

Frequency	DUP	Offset	Mode	Name	Your	RPT1	RPT2
440.72500	+DUP	5.0000	DV	KJ4BDF	CQCQCQ	KJ4BDF B	KJ4BDF G
440.72500	+DUP	5.0000	DV	BDF ECHO	E	KJ4BDF B	KJ4BDF G
440.72500	+DUP	5.0000	DV	BDF UNL	U	KJ4BDF B	KJ4BDF G
440.72500	+DUP	5.0000	DV	BDF INFO	I	KJ4BDF B	KJ4BDF G
440.72500	+DUP	5.0000	DV	BDF R01C	REF001CL	KJ4BDF B	KJ4BDF G
440.72500	+DUP	5.0000	DV	BDF R30L	REF030CL	KJ4BDF B	KJ4BDF G

The key factors here are:

- Create and organize the memories for your desires
- Memories are organized into banks of 100

---

## IMPORTING INTO MEMORY CH

---

## CREATING AND MODIFYING THE MEMORY CH BANK FILE

With the paramount goal of creating a file with 100 channels are list for each group of memories, planning is important. [www.DSTARInfo.com](http://www.DSTARInfo.com) supports the creation of Memory CH files to assist you in the process.

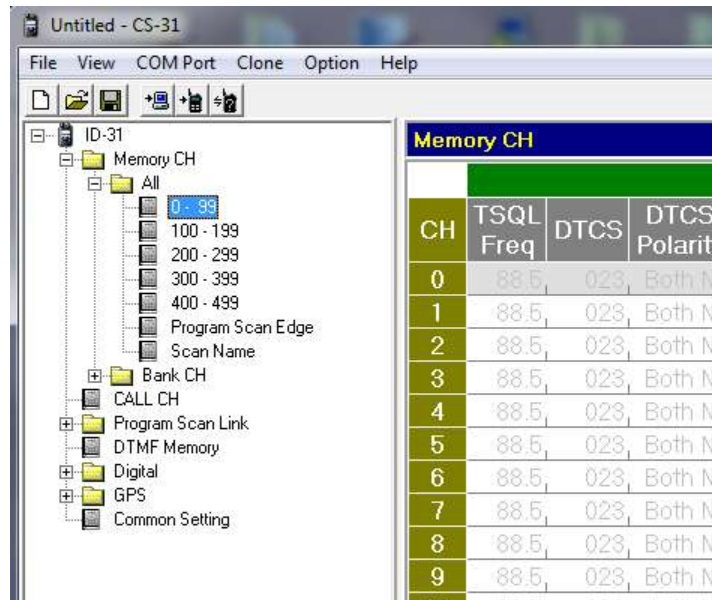
To keep the size of the file under 100 channels, it is recommended that you create a download file from one of the “Subregions.” These files are generally of the size and represent the area that you may commonly be located in. You may also desire to download some adjacent Subregions if you are travelling.

If you happen to download a file with more than 100 entries, or you want to combine files, manual editing of the files is acceptable. Just make sure that the first line is always the header line and that the header line appears nowhere else in the file.

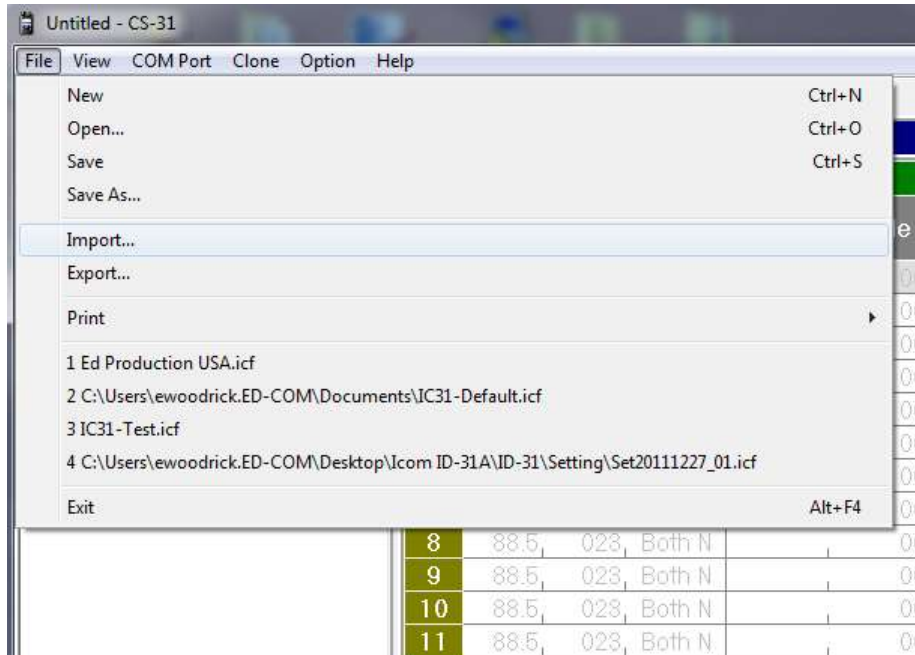
---

## IMPORTING INTO THE SOFTWARE

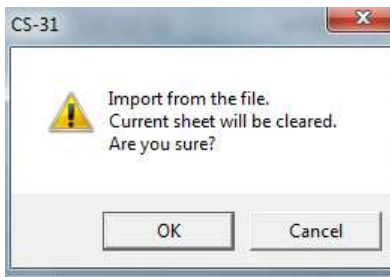
Once you have your file(s) created, they need to be loaded into the software. Remember to make sure that you have loaded your radio’s configuration into the radio first “Load Configuration from Radio”, and then select the specific bank that you want to import into.



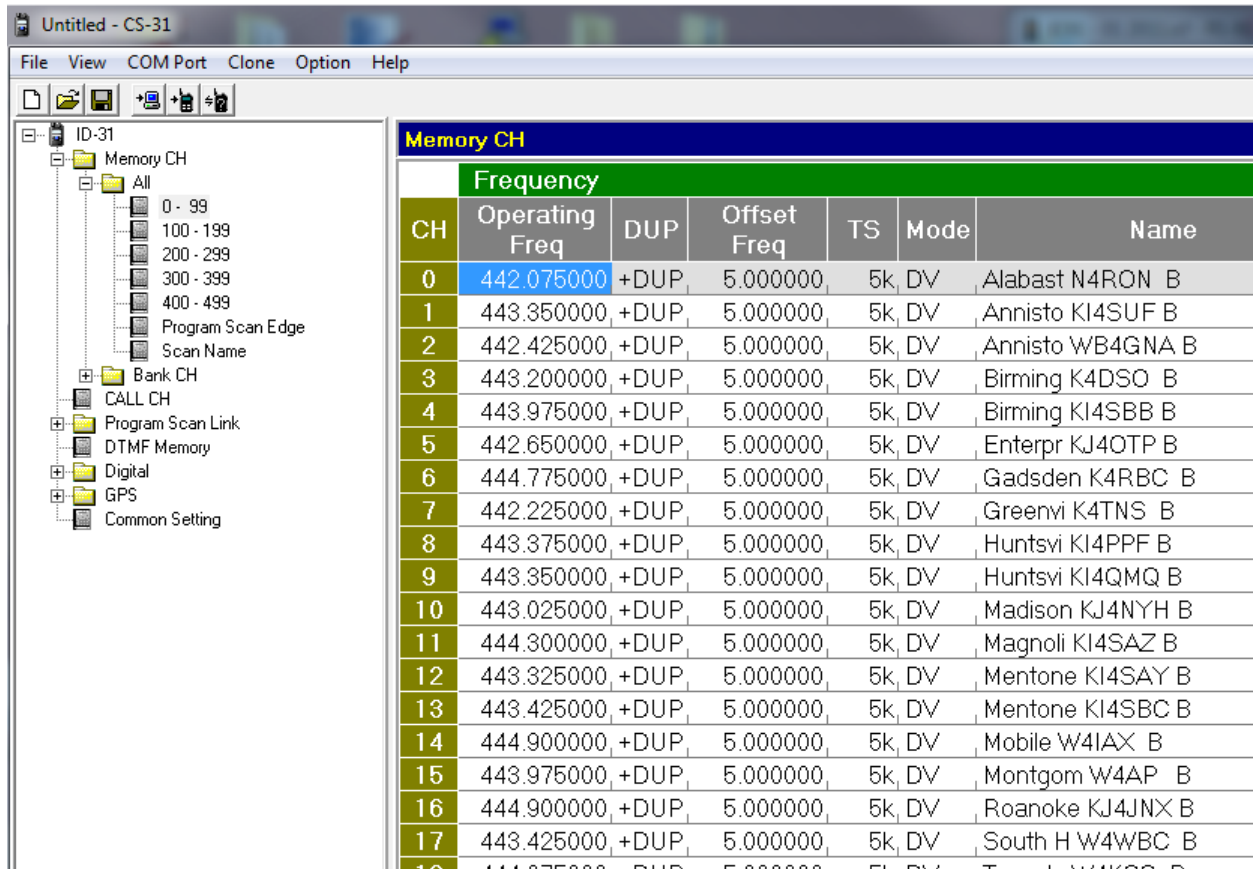
Once the bank is select, choose the import... command.



Then specify the file that you want to import. You may see the following message, select OK.



That's it; you should now see your memories similar to this:



Remember to save your settings back to the radio “Saving Software Configuration to Radio.

## IMPORTING INTO REPEATER LIST

The Repeater List changed as the DR Mode was created.

For radios without DR Mode, the list is called Repeater Call Sign and is a flat list of Repeater Call Signs with a gateway

For radios with DR Mode, the list is called Repeater List and is sectioned into Groups. The information for each item is significantly larger, including the Repeater Call Sign, Gateway Call Sign, Operating Frequency, DUP/Offset and even coordinates and time zone.

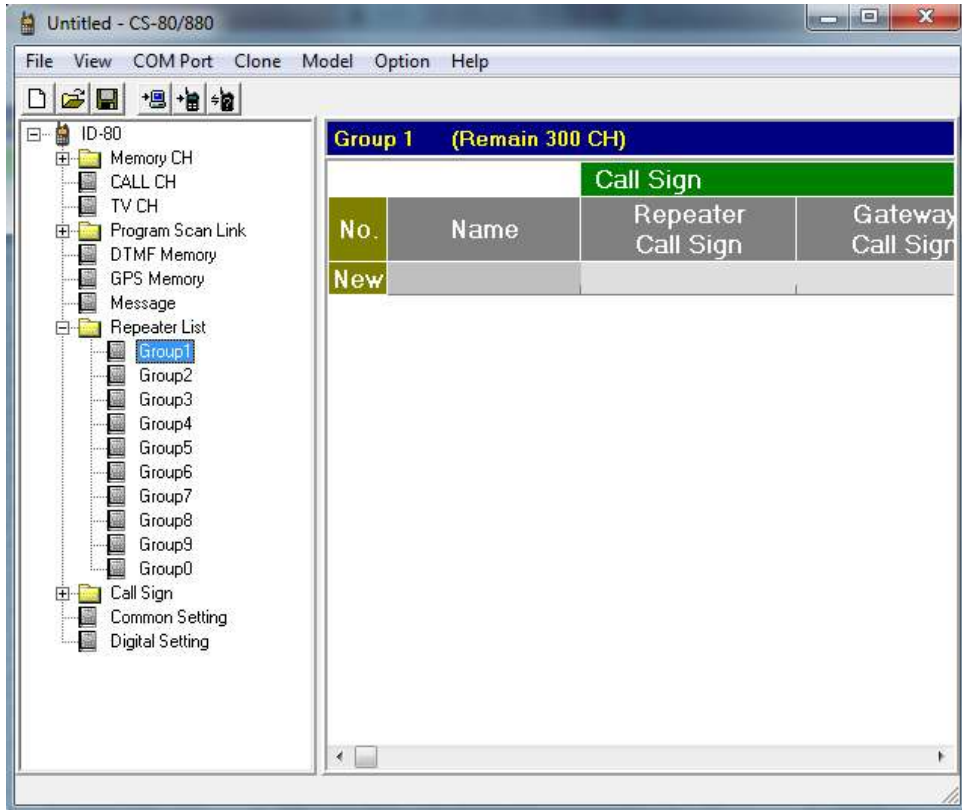
## CREATING AND MODIFYING THE MEMORY REPEATER LIST FILE.

The Repeater Lists Memories are significantly more flexible than the Memory CH Memories. While they are split into groups, the groups can be of varying sizes, as long as the total numbers of entries don’t surpass the limit. In the CS-31 software, the group names are part of the import.

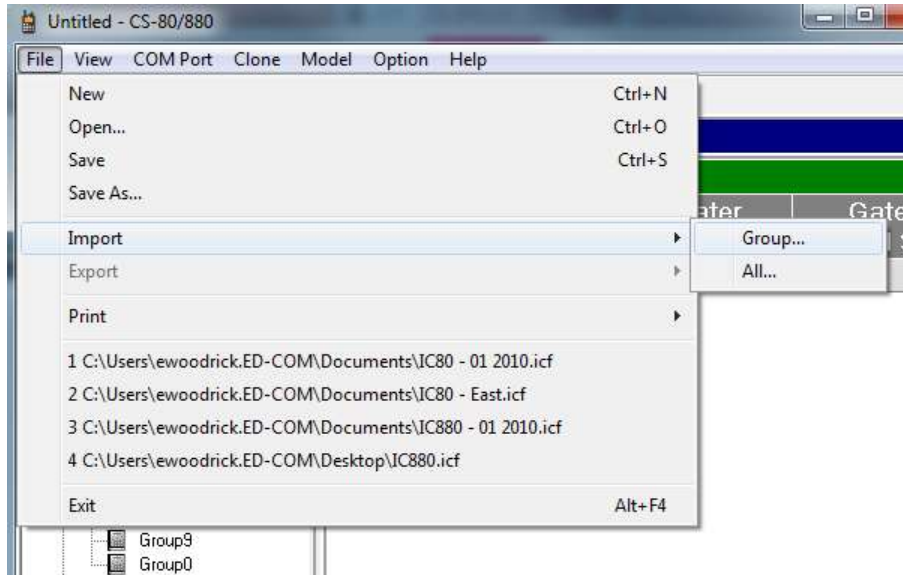
One of the items to look out for is that there are only as many Group Names as the radio supports.

## IMPORTING INTO THE SOFTWARE

Once you have your file(s) created, they need to be loaded into the software. Remember to make sure that you have loaded your radio's configuration into the radio first "Load Configuration from Radio", and then select the specific group that you want to import into.

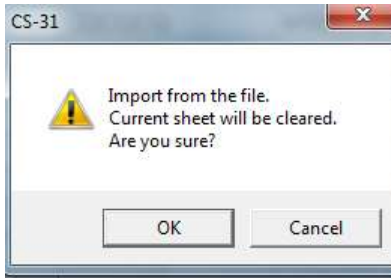


Once the group is selected, choose the import... command. This command has two options, a specific group or all groups. For many of the download options at DSTARInfo.com, you will want to choose All...

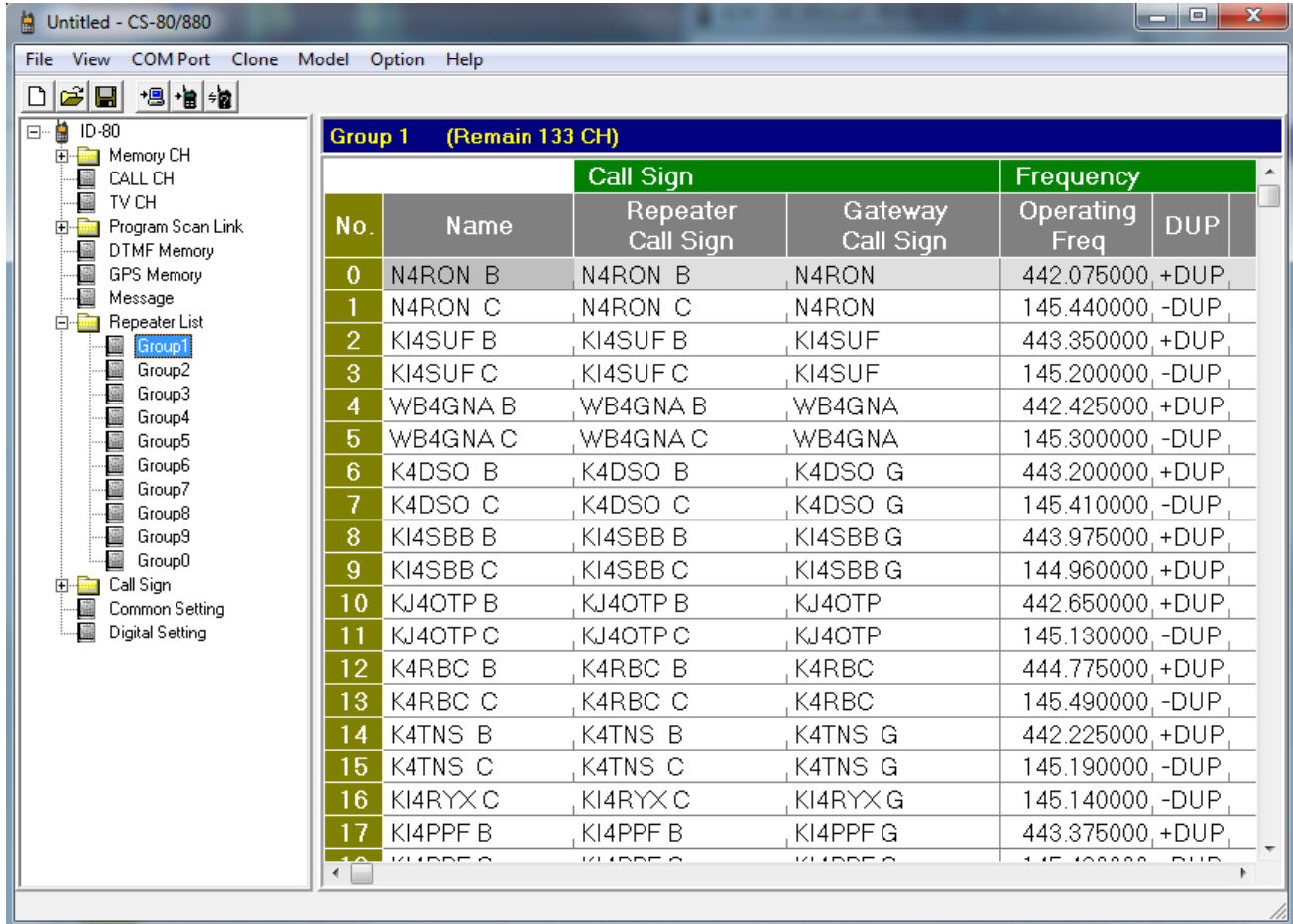


Then specify the file that you want to import. You may see the following message, select OK.





That's it; you should now see your Repeater List Memories similar to this:



Remember to save your settings back to the radio “Saving Software Configuration to Radio.

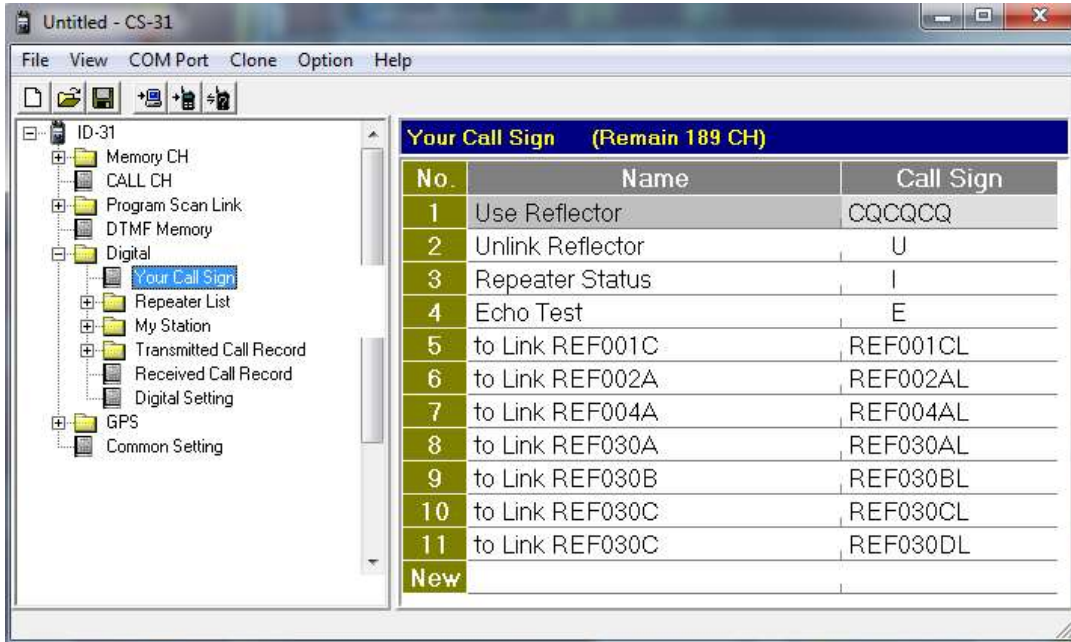
## IMPORTING INTO YOUR CALL SIGN

### CREATING AND MODIFYING THE YOUR CALL SIGN FILE.

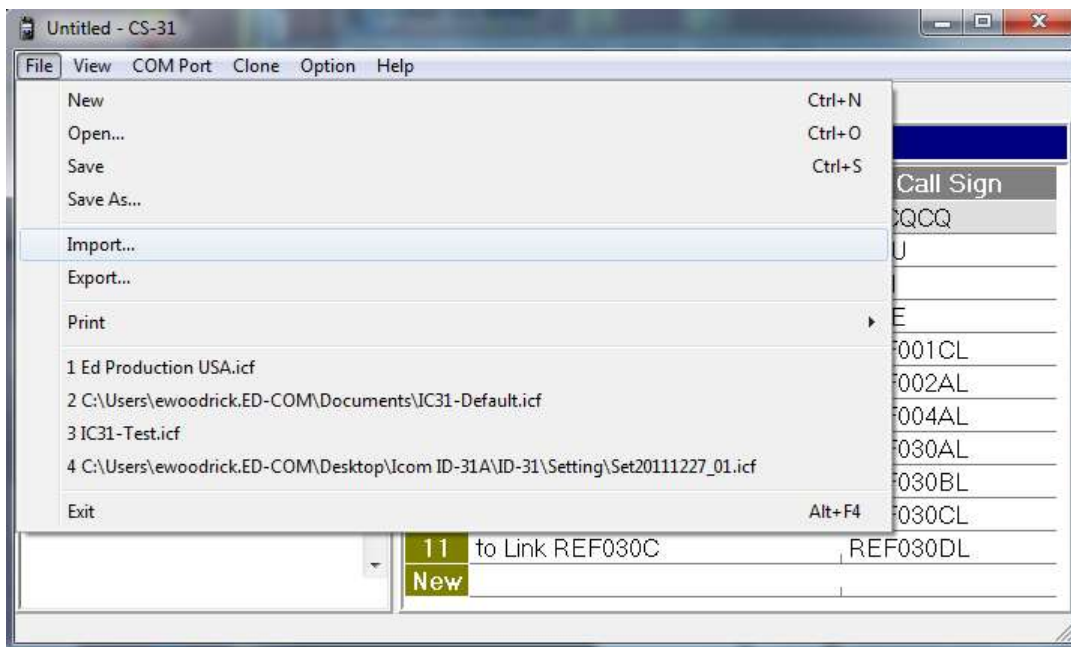
The Your Call Sign Memory list is a simple flat list. In most radios, the list is just a list of call signs, the CS-31 software adds a Name field for better display.

IMPORTING INTO THE SOFTWARE

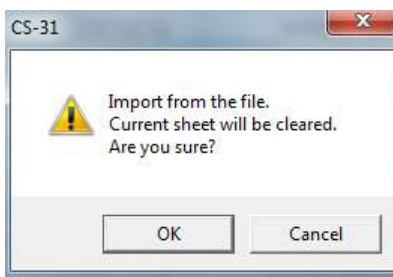
Once you have your file(s) created, they need to be loaded into the software. Remember to make sure that you have loaded your radio’s configuration into the radio first “Load Configuration from Radio”, and then select the Your Call Sign field.



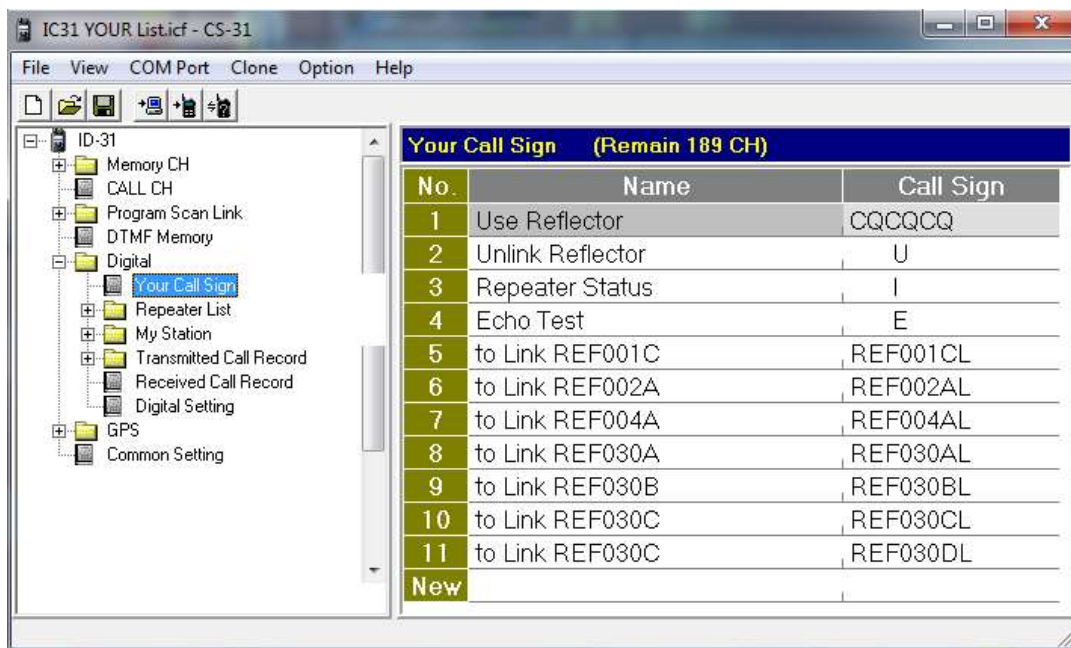
Once the Your Call Sign field is selected, choose the import... command



Then specify the file that you want to import. You may see the following message, select OK.




That's it; you should now see you're your Call Sign Memories similar to this:



Remember to save your settings back to the radio "Saving Software Configuration to Radio.

#### SAVING SOFTWARE CONFIGURATION TO RADIO.

Once you have configured your memories as desired, choose the  button (or Clone – Write->TR) and the information will be written back to your radio.